

INTRAOPERATIVE LOCALIZATION OF  
SENTINEL LYMPH NODES PROVIDED BY  
**SURGEGUIDE II**



Providing Ultimate Solution for Surgery

ISO 9001:2008  
ISO 13485:2003  
IEC 60601-1:2012

# SURGEGUIDE II

## Gamma Probe



Due to high prevalence of breast cancer in females, there are annually lots of breast surgical operations for removal of malignant tumors. However, failure in discovery and removal of cancerous lymph nodes (sentinel nodes) will lead to metastasis of cancer in the patient. Currently there are various methods with different degrees of accuracy to detect sentinel nodes. Amongst all of them, still the most common and most favorite device for surgeons is gamma probe providing an easy-to-use small hand-held tool with the capability of detection and localization of sentinel lymph nodes not only in breast cancer but also for some masculine types of cancers where detection of sentinel nodes is mandatory. We developed such a gamma probe system: **SURGEGUIDE II**.



**Probe Features:**

- Ergonomic Design
- Light Weight
- 30-deg Tilt (optionally straight)

We are ready to receive your new concepts for designing and manufacturing of dedicated or different shape probes such as altering the tilt degree, the length of the tip or the probe, etc. Our profession is to convert your concepts into functional products.

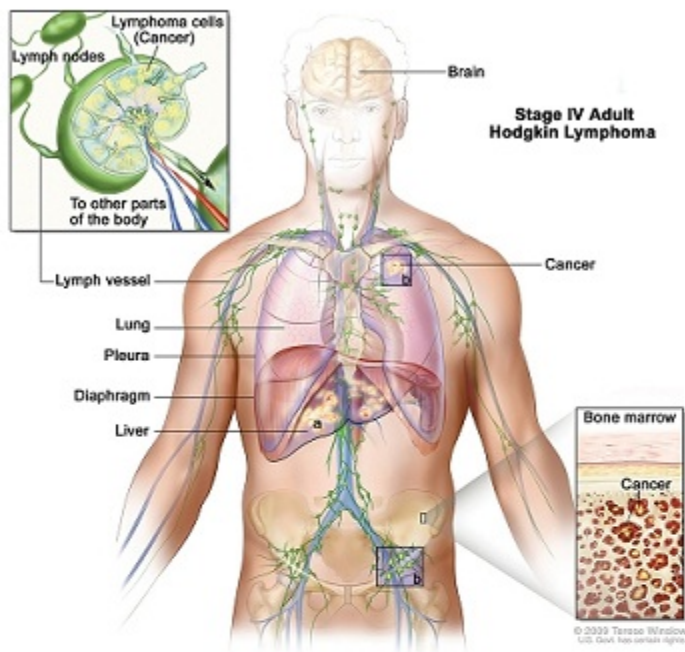
# SURGEGUIDE II

## Gamma Probe

### Specifications:

- Sensitivity: ~2 cps/MBq @ 3 cm
- Shielding Efficiency: 99.6 % for Tc-99m
- Energy Resolution: <11% FWHM for Tc-99m
- Three types of Probes: Large Tip, Small Tip, Endoscopic
- Length: 21 cm
- Tip Diameter: 16 mm(Large), 11 mm (Small), 10 mm (Endoscopic)
- Stainless Steel Body , Tungsten Collimator
- Angular Resolution: 30°, 45°, 95° (optional)
- Local Resolution: <40 mm FWHM at 5 cm distance(For Large Probe)
- User- Friendly Console
- Bright Display
- FM/Beep Sound
- Two Probes Simultaneously
- Light Weight Console
- Battery-powered (optional)





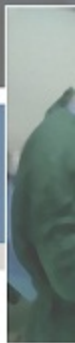
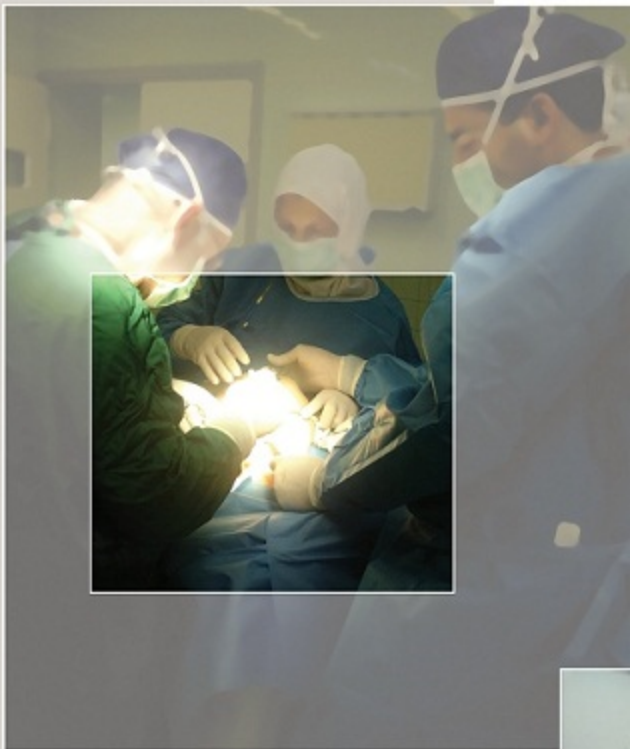
#### Clinical Applications:

- Breast cancer
- Gynecological cancers (cervical, ovarian, uterine, vaginal and vulvar)
- Melanoma and other types of skin tumors
- Head & Neck
- Endocrine cancers (thyroid, parathyroid)
- Urology cancers (prostate, bladder, testicular, kidney and penile)
- Nuclear Medicine (localization of gamma labeled areas)

# SURGEGUIDE II

## Gamma Probe

We stand beside you through the whole  
life time of the **SURGEGUIDE II**.



All of our products are designed and manufactured based on national and international safety and quality rules.

Having such certificates guarantees the safety and quality of **SURGEDGUIDE II**.

**ISO 9001:2008** specifies requirements for a quality management system.

**ISO 13485:2003** specifies requirements for a quality management system where an organization needs to demonstrate its ability to provide medical devices and related services that consistently meet customer requirements and regulatory requirements applicable to medical devices and related services.

**IEC 60601-1:2012** contains requirements concerning basic safety and essential performance that are generally applicable to medical electrical equipment.





توسعه صنایع تصویر برداری پرتو نگار پارسیا  
طراحی و تولید سیستمهای تصویر برداری  
**Parto Negar Persia Co.**

تهران، بلوار کشاورز، مجتمع بیمارستانی امام خمینی، مرکز رشد لوازم و تجهیزات پزشکی  
تلفن: ۰۲۱ - ۶۶۹۰۷۵۳۲      فکس: ۰۲۱ - ۶۶۹۰۷۵۳۲

Incubation Center for Medical Equipment and Devices, Imam Khomeini Hospital Complex,  
Keshavarz Blvd, Tehran, Iran, Po. Box: 14185-615

Tel: +98 21 - 66 90 75 32

Fax: +98 21 - 66 90 75 32

[www.pnmed.com](http://www.pnmed.com)

[info@pnmed.com](mailto:info@pnmed.com)



موسسه صندوق پژوهش و فناوری پرشین داروی البرز  
**Persian Darou Alborz Research and Technology Fund**

تهران، میدان آرژانتین، خیابان احمد قصیر، نبش خیابان شانزدهم، ساختمان سهند، پلاک ۴۱، طبقه اول  
تلفن: ۰۲۱ - ۸۸۷۳۴۰۳۰      فکس: ۰۲۱ - ۸۸۷۳۷۰۰۳

2nd Unit, 1st Floor, No. 41, Sahand Building, 16th St., Ahmad Ghasir St., Argentina Sq.  
Tehran, Iran, Po. Box: 1514833115

Tel: +98 21 - 88 73 40 40

Fax: +98 21 - 88 73 70 03

[www.pdartf.com](http://www.pdartf.com)

[info@pdartf.com](mailto:info@pdartf.com)